

Blue Route

Existing Route Profile

	Weekday	Saturday	Sunday
Hours of Operation			
	6:30 a.m. - 8:57 p.m.	8:00 a.m. - 6:30 p.m.	No Service
Daily Number of Trips			
	13 to Downtown, 12 to Uptown	7 in each direction	-
Average Daily Ridership			
This Route	114	-	-
System Average	136	71	-
System Rank	4 out of 11	-	-
Productivity (passengers per revenue hour)			
This Route	3.15	-	-
System Average	2.57	3.68	-
System Rank	4 out of 11	-	-
Operating Cost per Passenger Trip			
This Route	\$23.74	-	-
System Average	\$47.85	\$24.62	-


**On-Time
Performance**

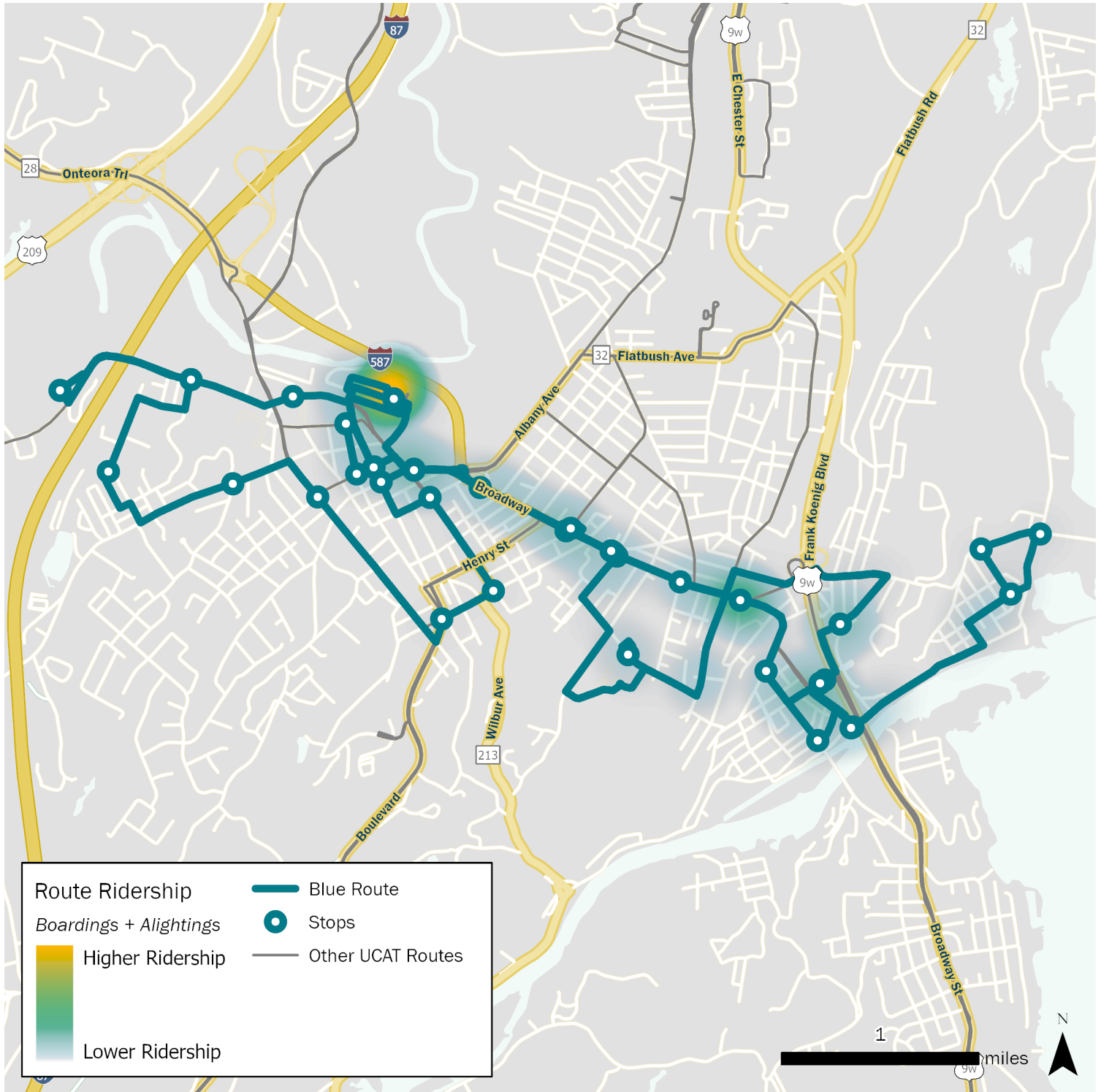


Route Demographics		
Measure	Total	System Rank
Population with 1/4 mile of route	14,705	4 out of 11
Population density (people per acre)	5.47	1 out of 11
Jobs within 1/4 mile of route	9,251	3 out of 11
Job density (jobs per acre)	3.44	1 out of 11

For more information about this route,
visit <https://ucat.ulstercountyny.gov/routes/blue-route/>

Blue Route

Existing Route Profile



Major Destinations

Kingston Point, Hospitals, Broadway, and Kingston Plaza

For more information about this route,
visit <https://ucat.ulstercountyny.gov/routes/blue-route/>

College Link

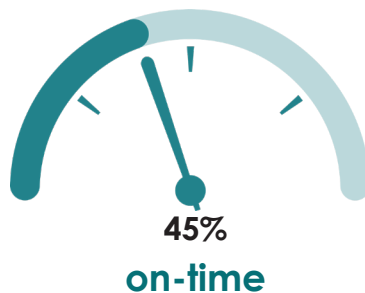
Existing Route Profile

Weekday	Saturday	Sunday
Hours of Operation		
5:20 a.m. - 8:30 p.m.	No Service	No Service
Daily Number of Trips		
8 in each direction	-	-

Average Daily Ridership			
This Route	40	-	-
System Average	136	71	-
System Rank	11 out of 11	-	-

Productivity (passengers per revenue hour)			
This Route	0.77	-	-
System Average	2.57	3.68	-
System Rank	10 out of 11	-	-

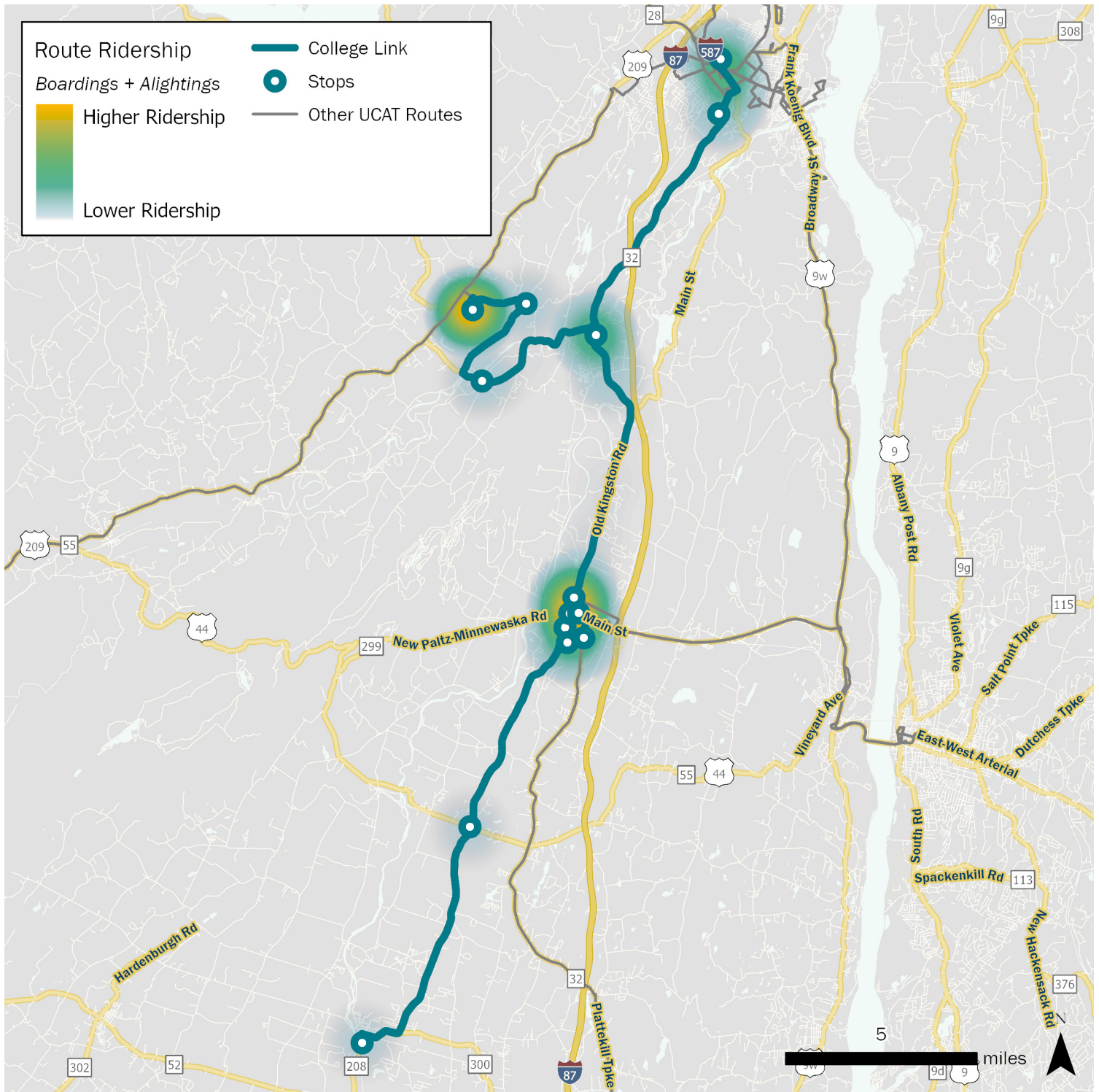
Operating Cost per Passenger Trip			
This Route	\$98.19	-	-
System Average	\$47.85	\$24.62	-



Route Demographics		
Measure	Total	System Rank
Population with 1/4 mile of route	15,702	3 out of 11
Population density (people per acre)	1.33	9 out of 11
Jobs within 1/4 mile of route	9,063	5 out of 11
Job density (jobs per acre)	0.77	8 out of 11

For more information about this route, visit <https://ucat.ulstercountyny.gov/routes/blue-route/>

Existing Route Profile



Major Destinations

SUNY Ulster, SUNY New Paltz, Gardner, Wallkill

For more information about this route,
visit <https://ucat.ulstercountyny.gov/routes/cl/>

Mall Loop

Existing Route Profile

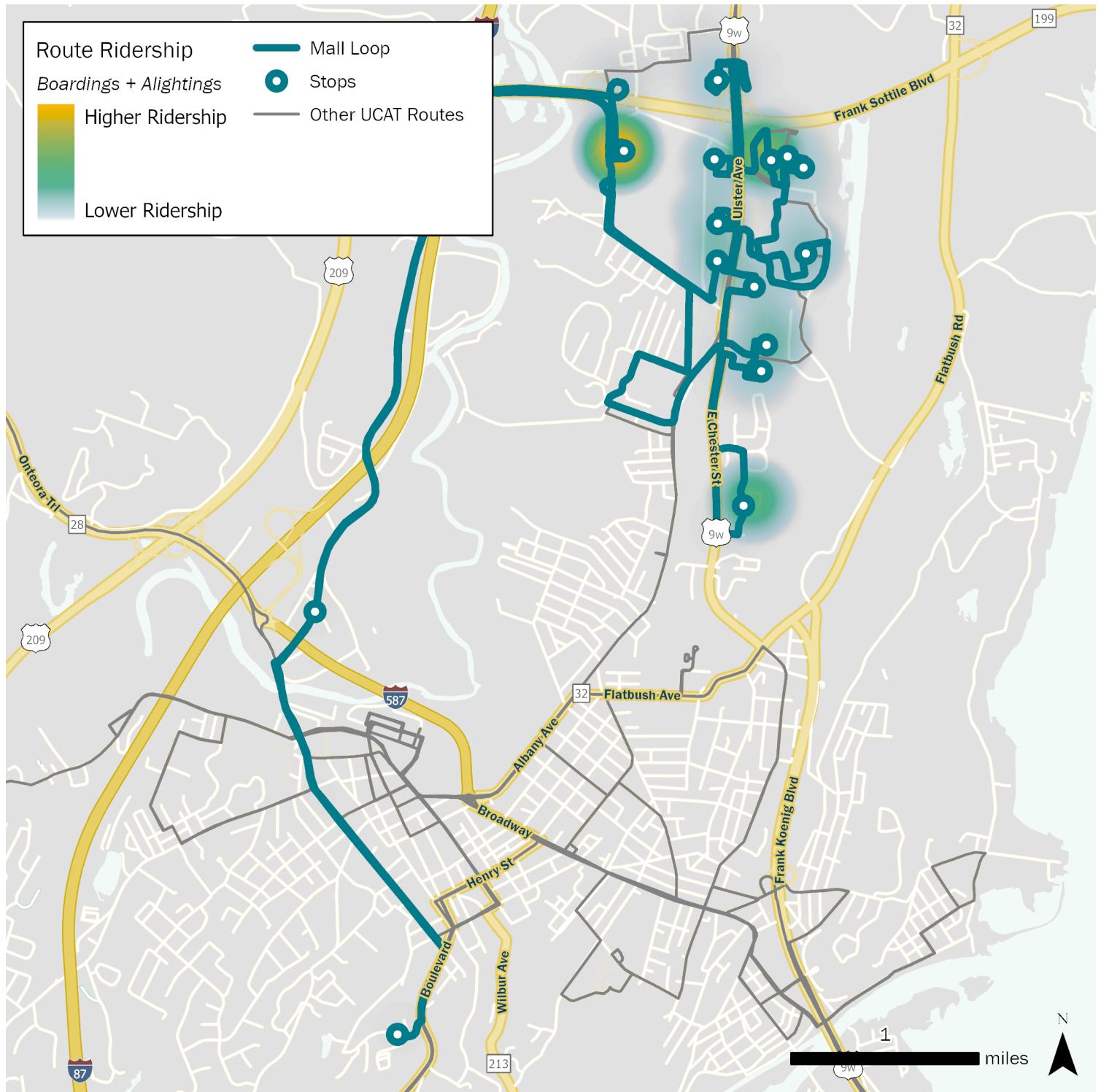
	Weekday	Saturday	Sunday
Hours of Operation			
	8:15 a.m. - 5:00 p.m.	No Service	No Service
Daily Number of Trips			
	9 loop trips	-	-
Average Daily Ridership			
This Route	73	-	-
System Average	136	71	-
System Rank	7 out of 11	-	-
Productivity (passengers per revenue hour)			
This Route	4.53	-	-
System Average	2.57	3.68	-
System Rank	3 out of 11	-	-
Operating Cost per Passenger Trip			
This Route	\$16.62	-	-
System Average	\$47.85	\$24.62	-



Route Demographics		
Measure	Total	System Rank
Population with 1/4 mile of route	6,001	10 out of 11
Population density (people per acre)	1.80	5 out of 11
Jobs within 1/4 mile of route	5,375	10 out of 11
Job density (jobs per acre)	1.62	3 out of 11

For more information about this route, visit <https://ucat.ulstercountyny.gov/routes/blue-route/>

Existing Route Profile



Major Destinations

Tech City, Kohl's Plaza

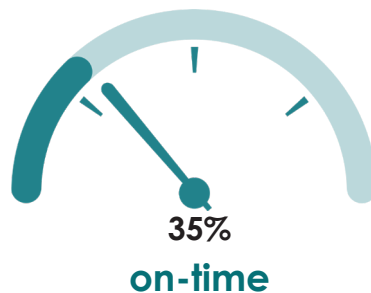
For more information about this route,
visit <https://ucat.ulstercountyny.gov/routes/mall-loop/>

Yellow Route

Existing Route Profile

	Weekday	Saturday	Sunday
Hours of Operation			
	6:30 a.m. - 8:30 p.m.	8:00 a.m. - 5:43 p.m.	No Service
Daily Number of Trips			
	10 in each direction	9 in each direction	-
Average Daily Ridership			
This Route	62	33	-
System Average	136	71	-
System Rank	8 out of 11	2 out of 2	-
Productivity (passengers per revenue hour)			
This Route	2.00	2.15	-
System Average	2.57	3.68	-
System Rank	6 out of 11	2 out of 2	-
Operating Cost per Passenger Trip			
This Route	\$37.66	\$34.84	-
System Average	\$47.85	\$24.62	-


**On-Time
Performance**

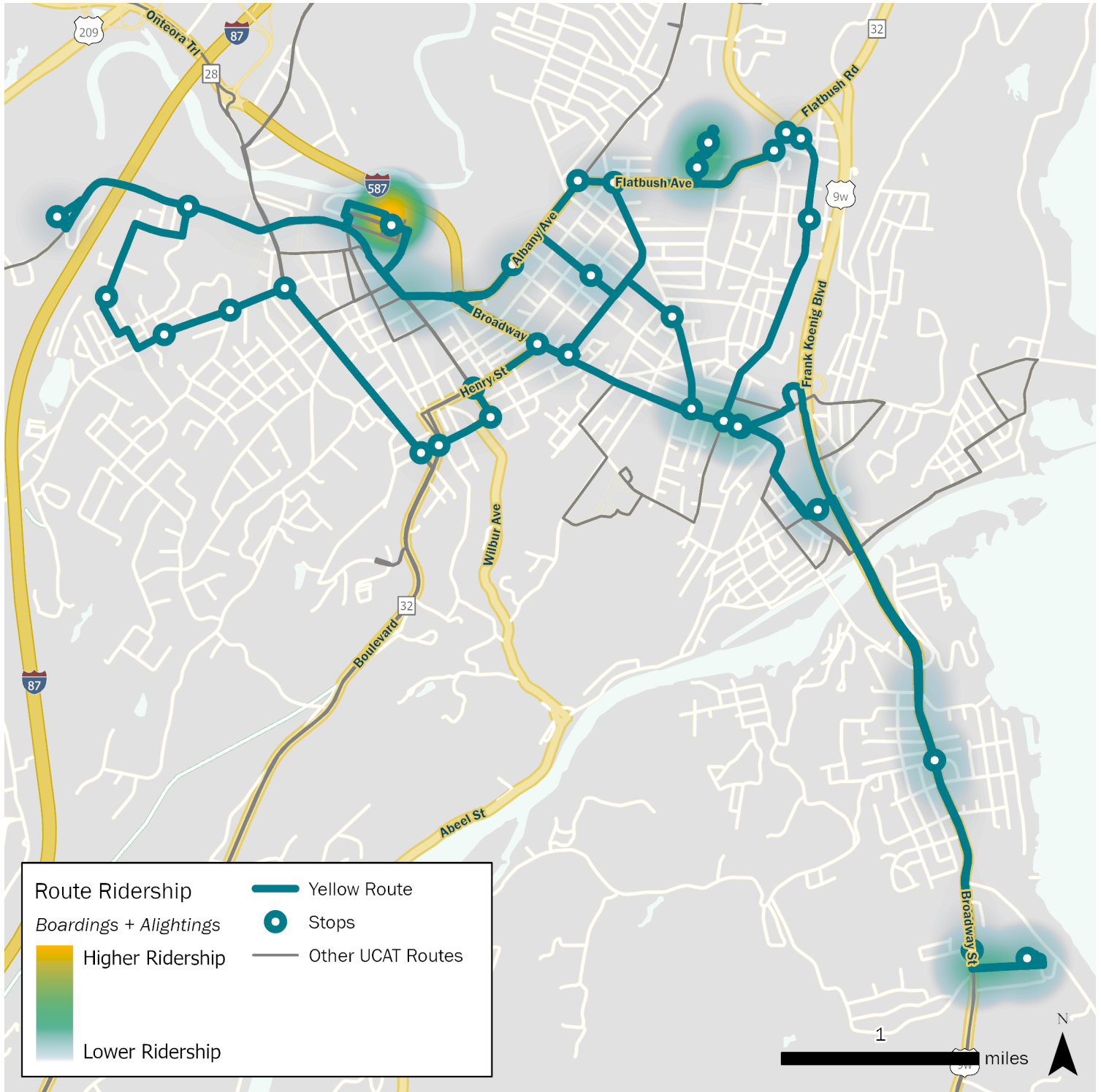


Route Demographics		
Measure	Total	System Rank
Population with 1/4 mile of route	17,681	1 out of 11
Population density (people per acre)	5.21	2 out of 11
Jobs within 1/4 mile of route	10,034	2 out of 11
Job density (jobs per acre)	2.96	2 out of 11

For more information about this route,
visit <https://ucat.ulstercountyny.gov/routes/blue-route/>

Yellow Route

Existing Route Profile



Major Destinations

City of Kingston, Port Ewen Route

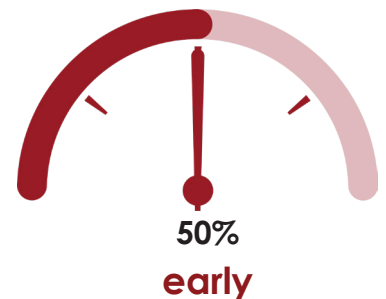
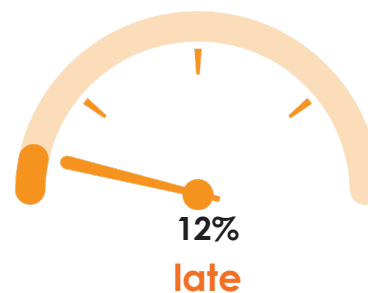
For more information about this route, visit <https://ucat.ulstercountyny.gov/routes/yellow/>

EU Route: Kingston - SUNY Ulster - Ellenville

Existing Route Profile

	Weekday	Saturday	Sunday
Hours of Operation			
	6:20 a.m. - 10:33 p.m.	7:50 a.m. - 6:05 p.m.	No Service
Daily Number of Trips			
	9 in each direction	4 in each direction	-
Average Daily Ridership			
This Route	301	-	-
System Average	136	71	-
System Rank	2 out of 11	-	-
Productivity (passengers per revenue hour)			
This Route	4.68	-	-
System Average	2.57	3.68	-
System Rank	2 out of 11	-	-
Operating Cost per Passenger Trip			
This Route	\$16.02	-	-
System Average	\$47.85	\$24.62	-


**On-Time
Performance**

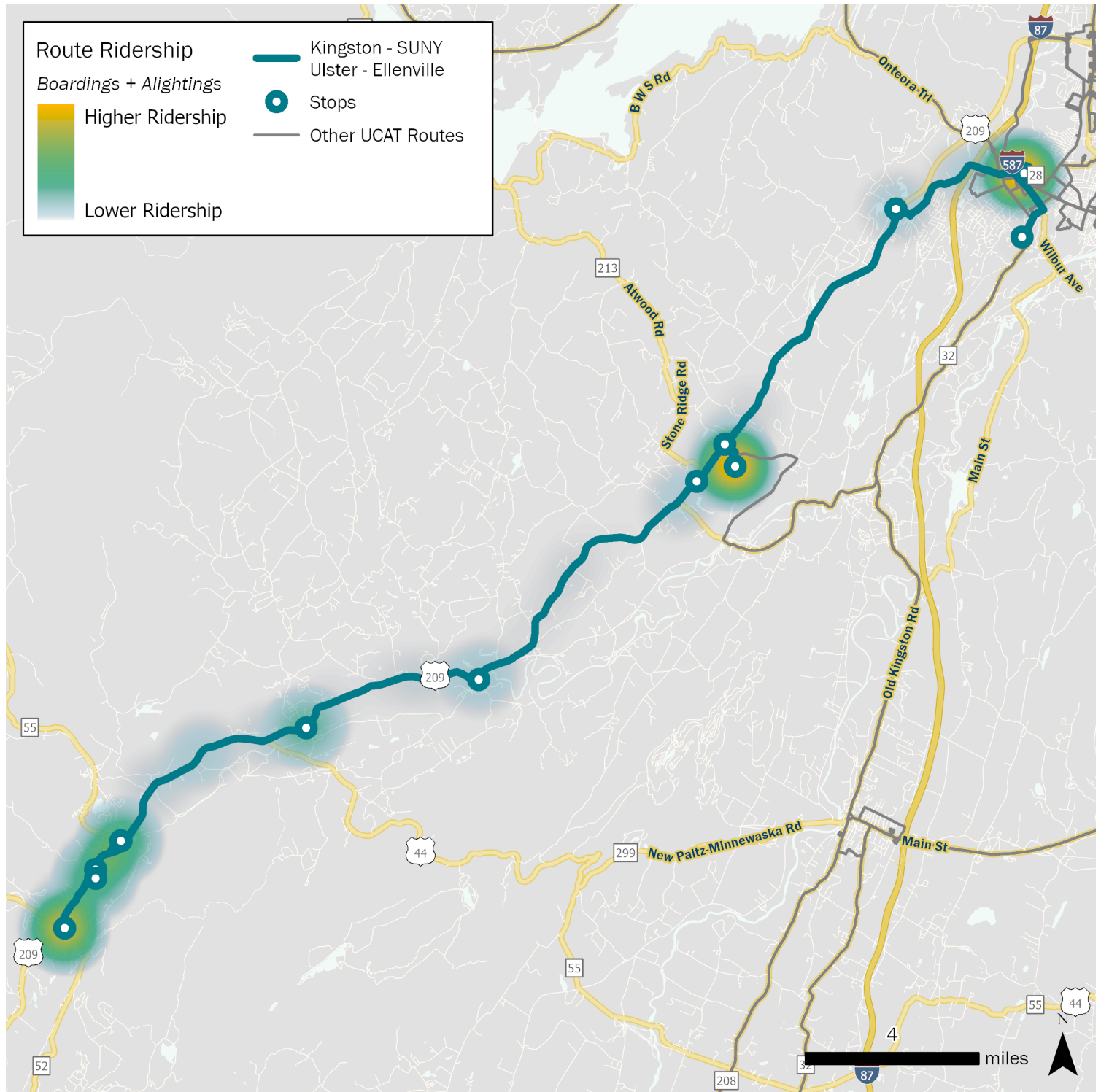


Route Demographics		
Measure	Total	System Rank
Population with 1/4 mile of route	9,532	8 out of 11
Population density (people per acre)	0.97	10 out of 11
Jobs within 1/4 mile of route	7,159	8 out of 11
Job density (jobs per acre)	0.73	9 out of 11

For more information about this route,
visit <https://ucat.ulstercountyny.gov/routes/blue-route/>

EU Route: Kingston - SUNY Ulster - Ellenville

Existing Route Profile



Major Destinations

Kingston Plaza, Ellenville

For more information about this route,
visit <https://ucat.ulstercountyny.gov/routes/EU/>

KPL Route: Kingston - Poughkeepsie

Existing Route Profile

	Weekday	Saturday	Sunday
Hours of Operation			
	5:20 a.m. - 9:15 p.m.	7:50 a.m. - 5:50 p.m.	10:30 a.m. - 6:30 p.m.
Daily Number of Trips			
	6 in each direction	5 in each direction	4 in each direction
Average Daily Ridership			
This Route	154	-	-
System Average	136	71	-
System Rank	3 out of 11	-	-
Productivity (passengers per revenue hour)			
This Route	2.52	-	-
System Average	2.57	3.68	-
System Rank	5 out of 11	-	-
Operating Cost per Passenger Trip			
This Route	\$29.82	-	-
System Average	\$47.85	\$24.62	-


**On-Time
Performance**

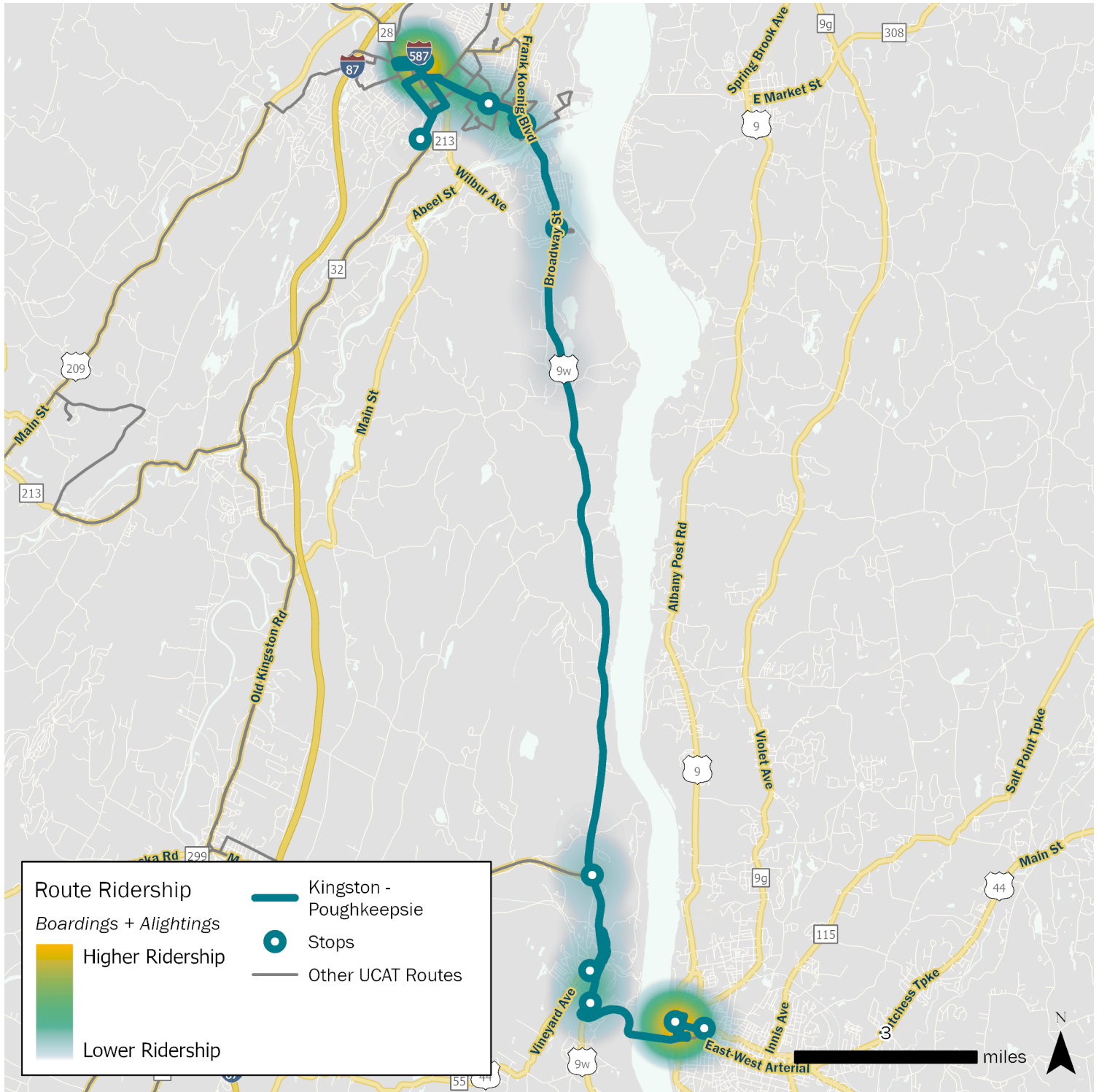


Route Demographics		
Measure	Total	System Rank
Population with 1/4 mile of route	13,523	7 out of 11
Population density (people per acre)	1.97	4 out of 11
Jobs within 1/4 mile of route	8,127	7 out of 11
Job density (jobs per acre)	1.19	5 out of 11

For more information about this route,
visit <https://ucat.ulstercountyny.gov/routes/blue-route/>

KPL Route: Kingston - Poughkeepsie

Existing Route Profile



Major Destinations

Kingston, Poughkeepsie Train Station

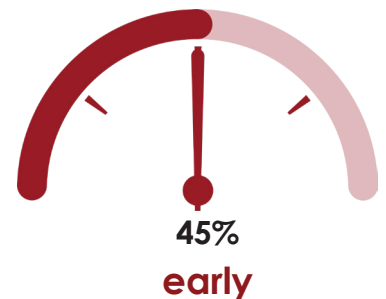
For more information about this route, visit <https://ucat.ulstercountyny.gov/routes/kpl/>

KS Route: Kingston - Mall - Saugerties

Existing Route Profile

	Weekday	Saturday	Sunday
Hours of Operation			
	5:20 a.m. - 10:55 p.m.	7:50 a.m. - 6:00 p.m.	No Service
Daily Number of Trips			
	16 in each direction	5 in each direction	-
Average Daily Ridership			
This Route	445	109	-
System Average	136	71	-
System Rank	1 out of 11	1 out of 2	-
Productivity (passengers per revenue hour)			
This Route	5.62	5.21	-
System Average	2.57	3.68	-
System Rank	1 out of 11	1 out of 2	-
Operating Cost per Passenger Trip			
This Route	\$13.34	\$14.40	-
System Average	\$47.85	\$24.62	-


**On-Time
Performance**

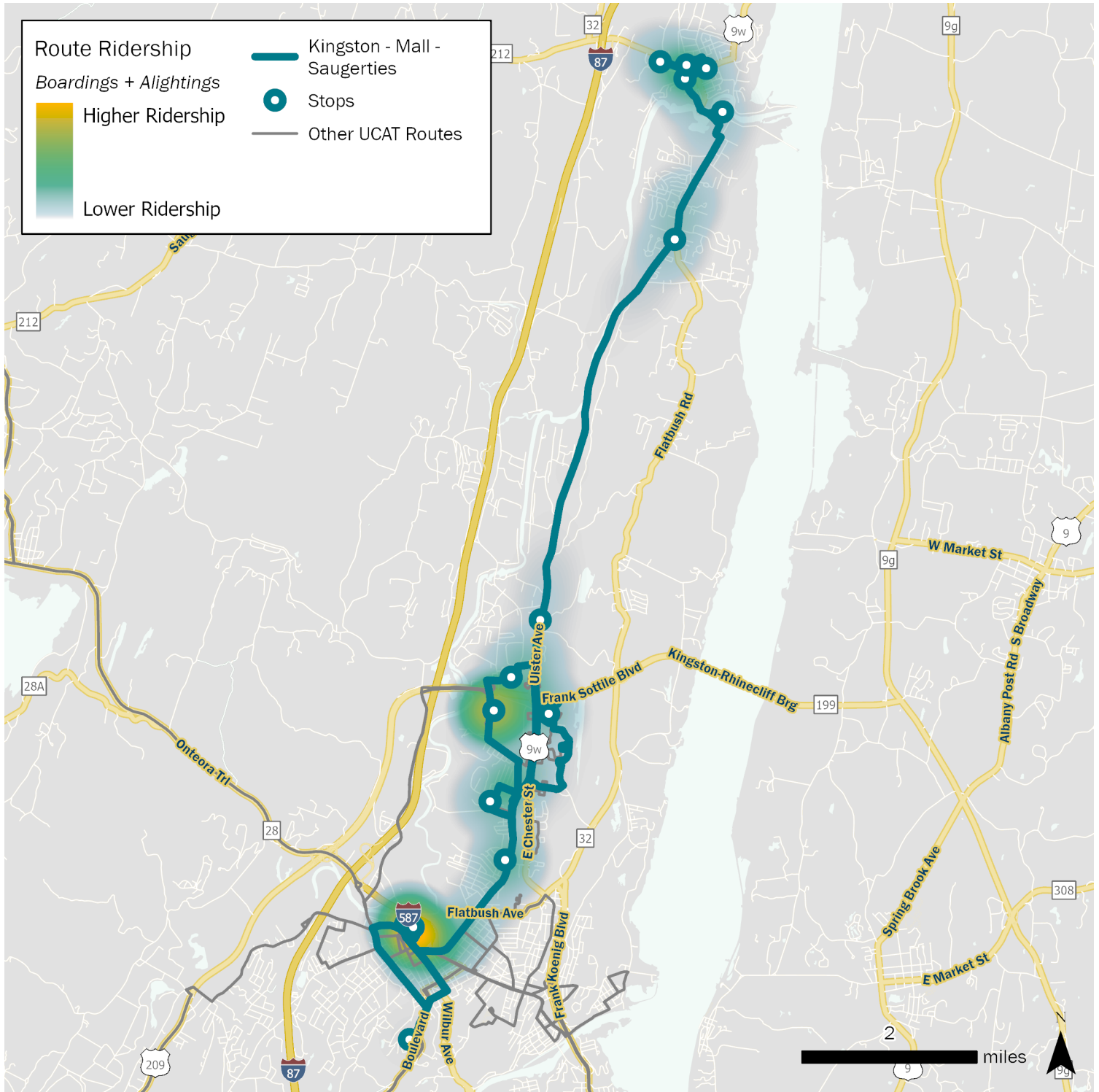


Route Demographics		
Measure	Total	System Rank
Population with 1/4 mile of route	14,698	5 out of 11
Population density (people per acre)	2.58	3 out of 11
Jobs within 1/4 mile of route	9,150	4 out of 11
Job density (jobs per acre)	1.61	4 out of 11

For more information about this route,
visit <https://ucat.ulstercountyny.gov/routes/blue-route/>

KS Route: Kingston - Mall - Saugerties

Existing Route Profile



Major Destinations

Kingston Plaza, Saugerties Price Chopper Plaza

For more information about this route,
visit <https://ucat.ulstercountyny.gov/routes/KS/>

New Paltz Loop

Existing Route Profile

	Weekday	Saturday	Sunday
Hours of Operation			
	7:10 a.m. - 9:00 p.m.	7:50 a.m. - 5:30 p.m.	7:50 a.m. - 5:30 p.m.
Daily Number of Trips			
	14 loop trips, 4 trips to/ from Kingston	16 loop trips	16 loop trips
Average Daily Ridership			
This Route	51	-	-
System Average	136	71	-
System Rank	10 out of 11	-	-
Productivity (passengers per revenue hour)			
This Route	0.59	-	-
System Average	2.57	3.68	-
System Rank	11 out of 11	-	-
Operating Cost per Passenger Trip			
This Route	\$127.26	-	-
System Average	\$47.85	\$24.62	-


**On-Time
Performance**

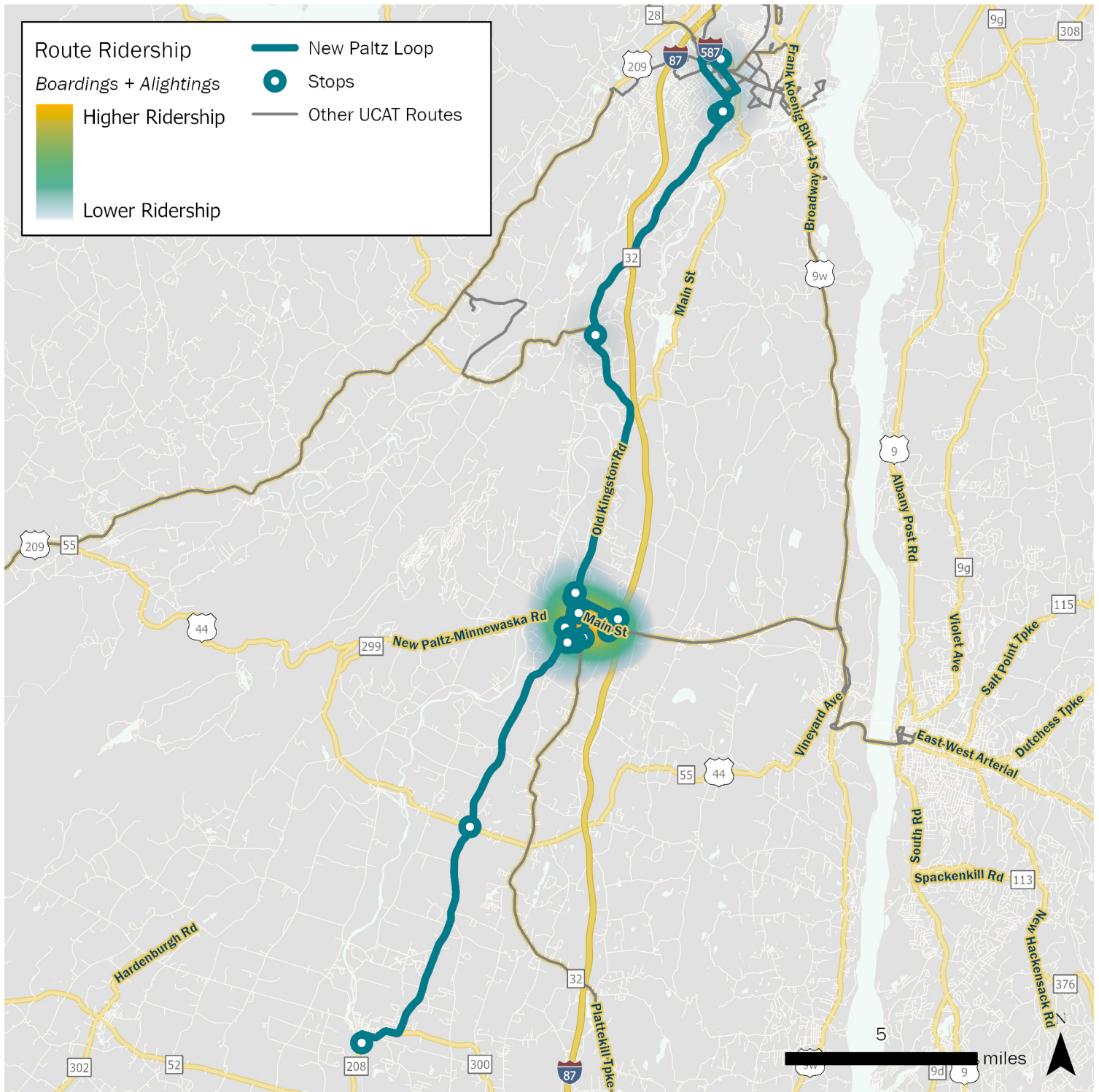


Route Demographics		
Measure	Total	System Rank
Population with 1/4 mile of route	17,109	2 out of 11
Population density (people per acre)	1.72	6 out of 11
Jobs within 1/4 mile of route	10,261	1 out of 11
Job density (jobs per acre)	1.03	6 out of 11

For more information about this route,
visit <https://ucat.ulstercountyny.gov/routes/blue-route/>

New Paltz Loop

Existing Route Profile



Major Destinations

New Paltz

For more information about this route, visit <https://ucat.ulstercountyny.gov/routes/new-paltz-loop/>

UPL Route: Ulster - Poughkeepsie

Existing Route Profile

	Weekday	Saturday	Sunday
Hours of Operation			
	5:15 a.m. - 10:40 p.m.	8:00 a.m. - 6:45 p.m.	7:40 a.m. - 4:00 p.m.
Daily Number of Trips			
	8 in each direction	5 in each direction	4 in each direction
Average Daily Ridership			
This Route	100	-	-
System Average	136	71	-
System Rank	5 out of 11	-	-
Productivity (passengers per revenue hour)			
This Route	1.69	-	-
System Average	2.57	3.68	-
System Rank	8 out of 11	-	-
Operating Cost per Passenger Trip			
This Route	\$44.60	-	-
System Average	\$47.85	\$24.62	-


**On-Time
Performance**

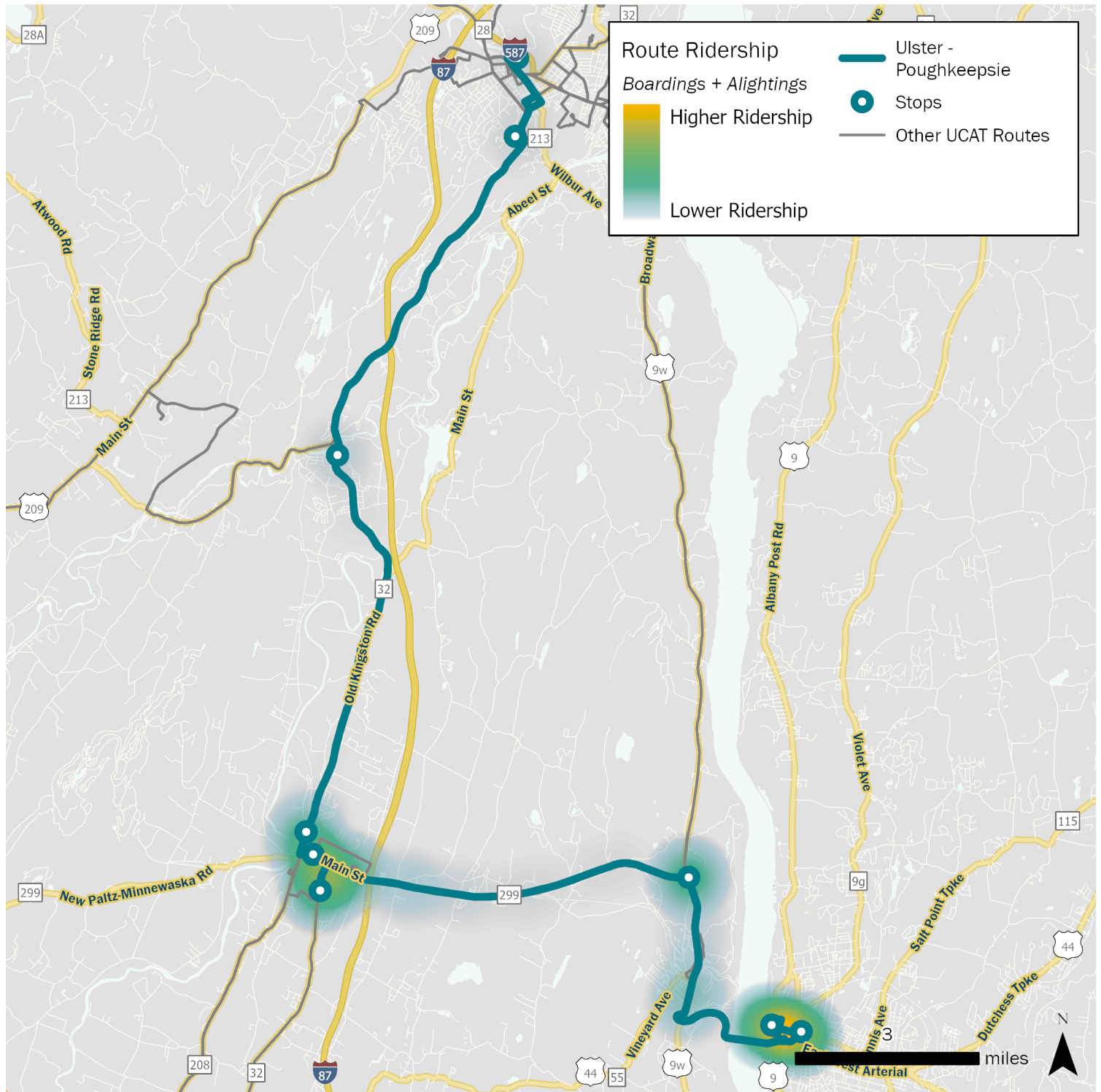


Route Demographics		
Measure	Total	System Rank
Population with 1/4 mile of route	14,385	6 out of 11
Population density (people per acre)	1.70	7 out of 11
Jobs within 1/4 mile of route	8,134	6 out of 11
Job density (jobs per acre)	0.96	7 out of 11

For more information about this route,
visit <https://ucat.ulstercountyny.gov/routes/blue-route/>

UPL Route: Ulster - Poughkeepsie

Existing Route Profile



Major Destinations

Rosendale Park and Ride, Poughkeepsie Train Station

For more information about this route,
visit <https://ucat.ulstercountyny.gov/routes/upl/>

X Route: Newburg - New Paltz

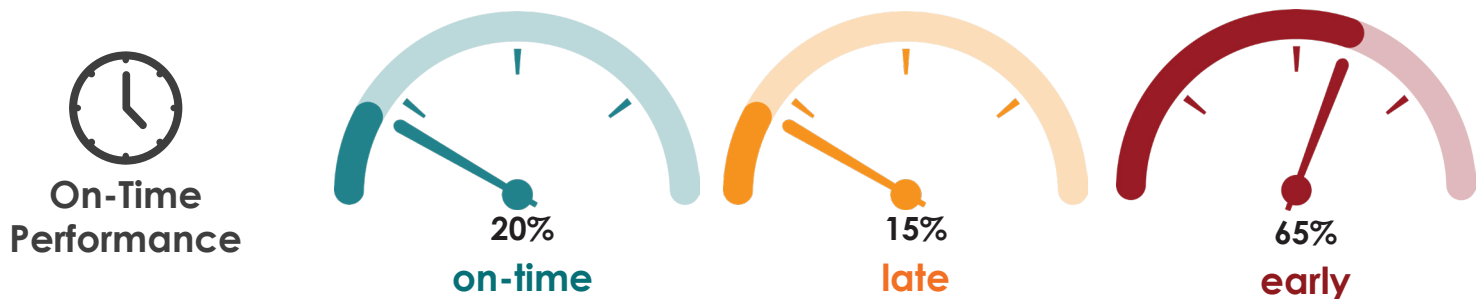
Existing Route Profile

Weekday	Saturday	Sunday
Hours of Operation		
5:50 a.m. - 8:46 p.m.	No Service	No Service
Daily Number of Trips		
5 in each direction	-	-

Average Daily Ridership			
This Route	55	-	-
System Average	136	71	-
System Rank	9 out of 11	-	-

Productivity (passengers per revenue hour)			
This Route	1.73	-	-
System Average	2.57	3.68	-
System Rank	7 out of 11	-	-

Operating Cost per Passenger Trip			
This Route	\$43.06	-	-
System Average	\$47.85	\$24.62	-

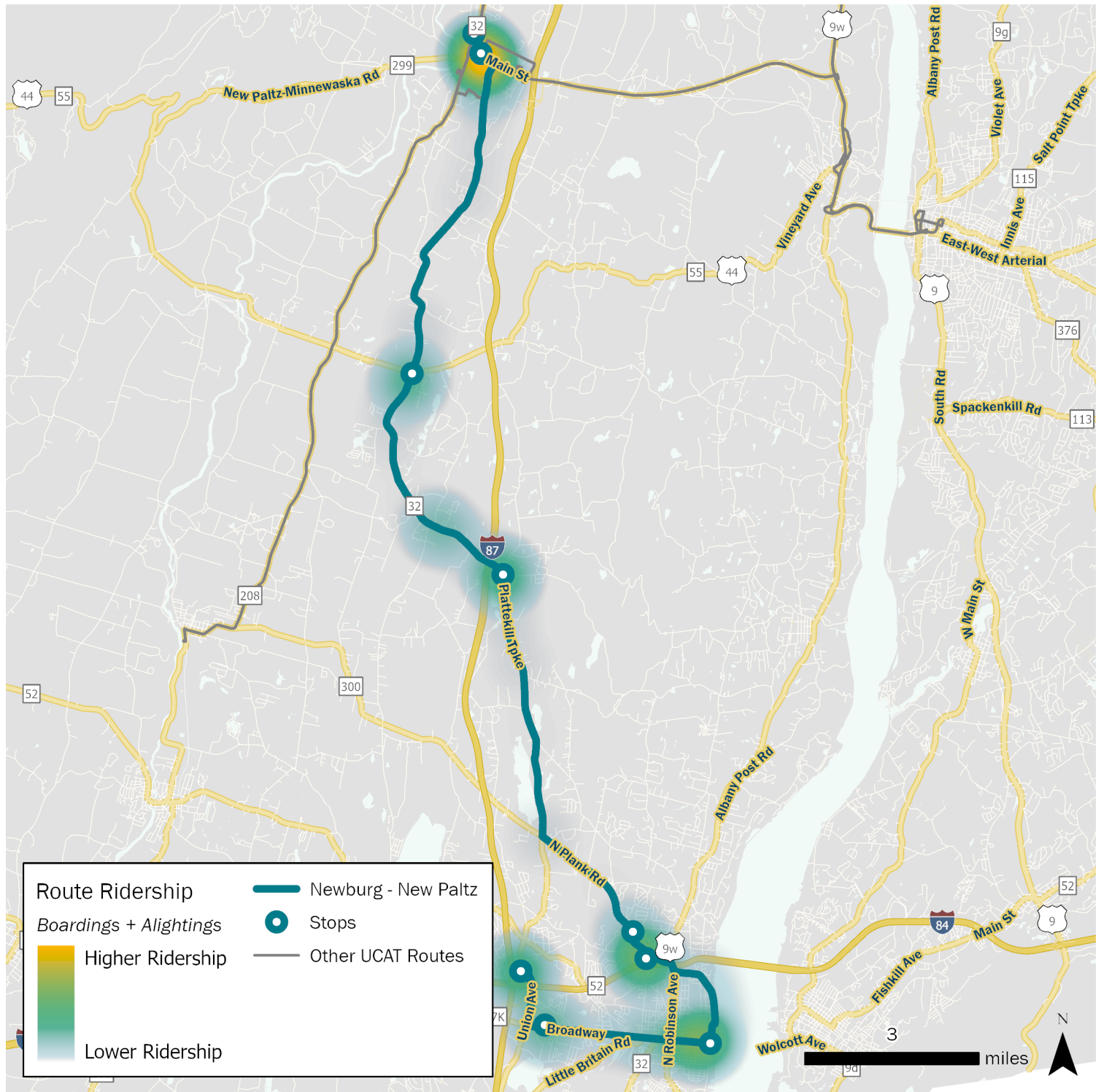


Route Demographics		
Measure	Total	System Rank
Population with 1/4 mile of route	5,525	11 out of 11
Population density (people per acre)	1.46	8 out of 11
Jobs within 1/4 mile of route	2,543	11 out of 11
Job density (jobs per acre)	0.67	10 out of 11

For more information about this route, visit <https://ucat.ulstercountyny.gov/routes/blue-route/>

X Route: Newburg - New Paltz

Existing Route Profile



Major Destinations

New Paltz, Newburgh Mall

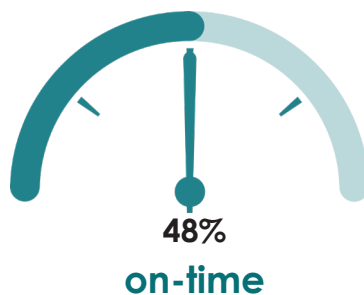
For more information about this route,
visit <https://ucat.ulstercountyny.gov/routes/x-route/>

Z Route: Kingston - Woodstock - Pine Hill

Existing Route Profile

	Weekday	Saturday	Sunday
Hours of Operation			
	5:00 a.m. - 8:39 p.m.	7:20 a.m. - 5:39 p.m.	No Service
Daily Number of Trips			
	8 in each direction	4 in each direction	-
Average Daily Ridership			
This Route	97	-	-
System Average	136	71	-
System Rank	6 out of 11	-	-
Productivity (passengers per revenue hour)			
This Route	0.99	-	-
System Average	2.57	3.68	-
System Rank	9 out of 11	-	-
Operating Cost per Passenger Trip			
This Route	\$75.97	-	-
System Average	\$47.85	\$24.62	-


**On-Time
Performance**

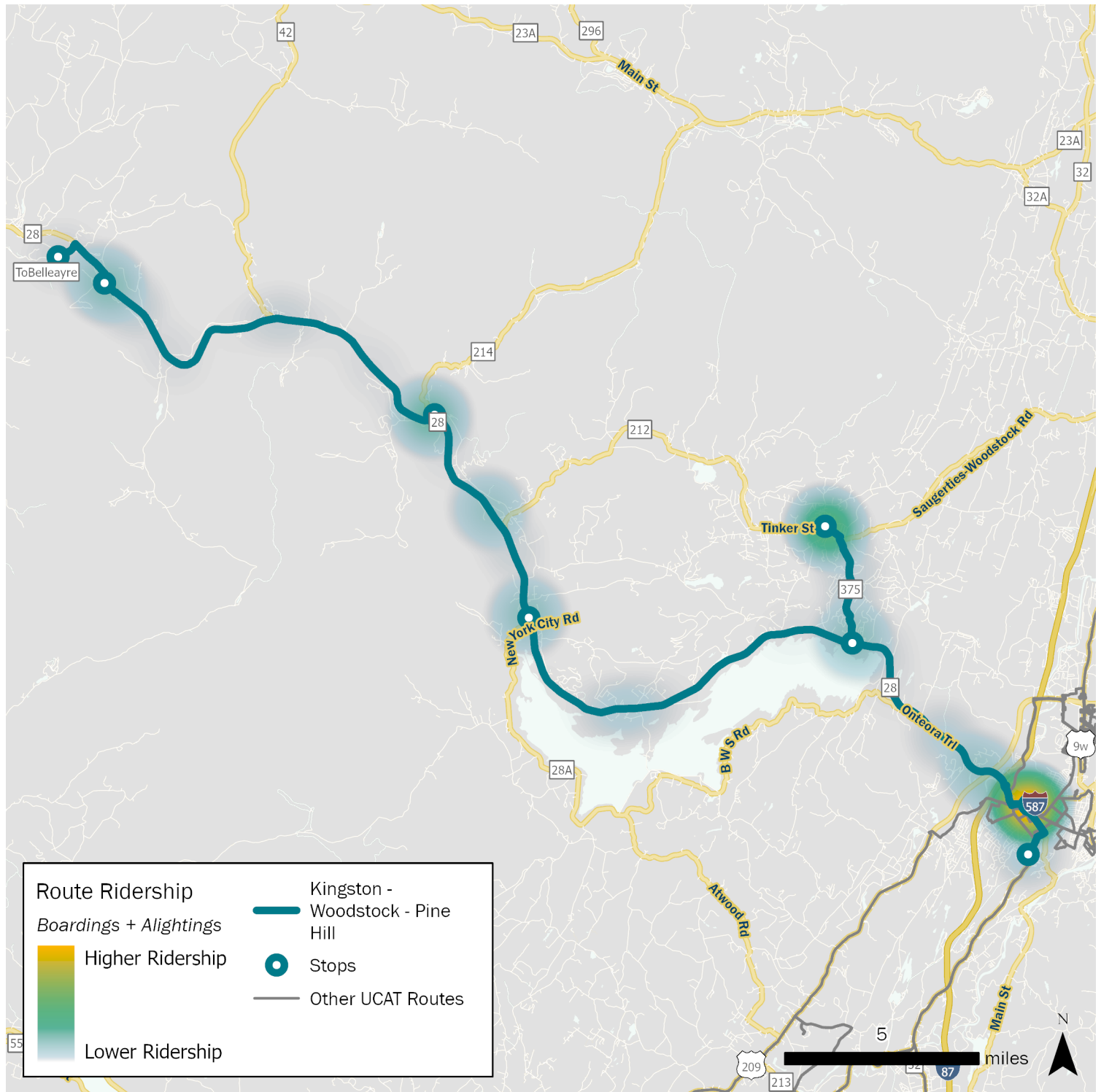


Route Demographics		
Measure	Total	System Rank
Population with 1/4 mile of route	7,426	9 out of 11
Population density (people per acre)	0.55	11 out of 11
Jobs within 1/4 mile of route	6,563	9 out of 11
Job density (jobs per acre)	0.49	11 out of 11

For more information about this route,
visit <https://ucat.ulstercountyny.gov/routes/blue-route/>

Z Route: Kingston - Woodstock - Pine Hill

Existing Route Profile



Major Destinations

Kingston, Woodstock, Phoenicia, Pine Hill, Belleayre

For more information about this route,
visit <https://ucat.ulstercountyny.gov/routes/z/>